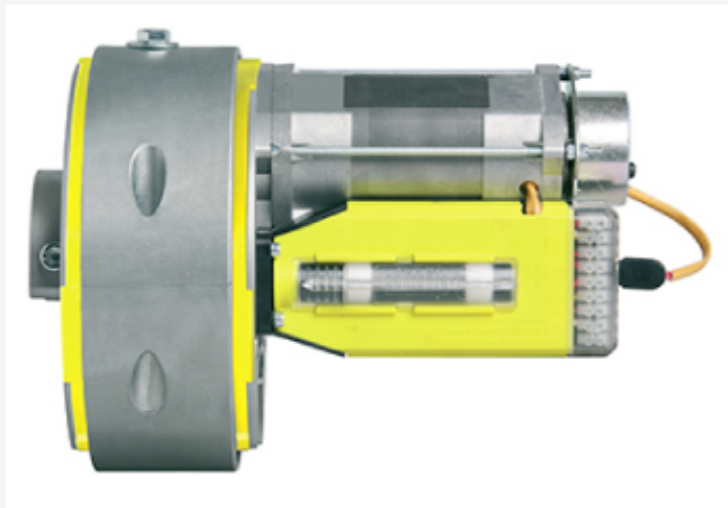
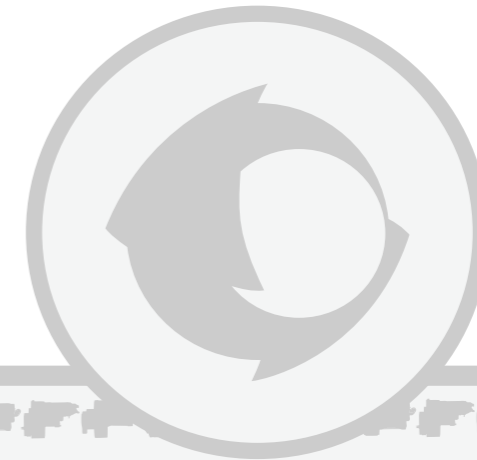
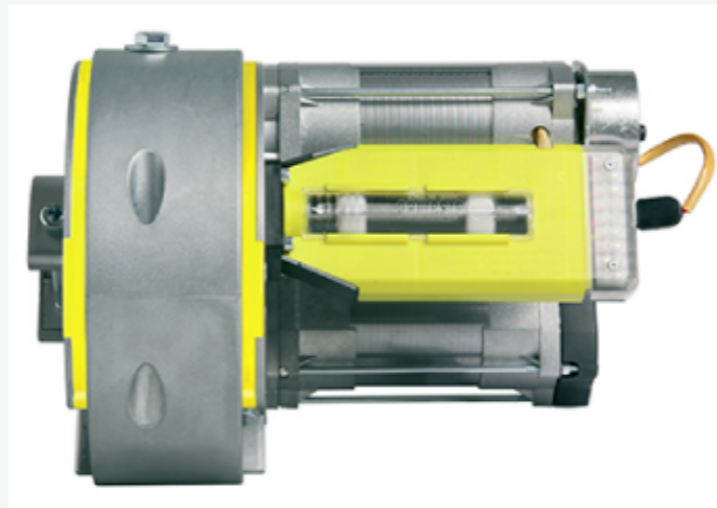


ES-76 Evolution



ES 76 - 1M EVOLUTION - cod. 71810000
Single-head central motor for rolling shutter



ES 76 - 2M EVOLUTION - cod. 71910000
Double-head central Motor for rolling shutter

This is a historical series of the motors, born in 1972, as the first OPEN MOTOR, split in two parts, easy to install even on existing shutters, without any operation of disassembling of the shaft needed. This revolutionary idea was patented and became immediately popular. It is still actual thanks to the constant technological refinements executed to keep it up to date.

The motors of the series EVOLUTION are manufactured using technologically advanced materials, which ensure reliability and longer life. The double reduction gear, assembled on both versions of the motor, ensures a greater lifting capacity on all shutters.

The limit-switch unit uses the same innovative principle introduced with series UNIKO: great range and extremely accurate regulation at the same time.

We produce two versions of the motor ES 76 EVOLUTION: the single-head and the double-head model.

Technical characteristics

Model	Ø rolling shutter tube mm	Ø winding flange mm	Power W	Amperage A	% Services	Voltage V	Frequency Hz	Insulation Class	Capacitor in mF	R.P.M.	Torque Nm	Lifting capacity Kg
ES 76 -1M EVOLUTION	76	240	650	2,8	95	230	50	B	16	7,4	190	161
ES 76 -2M EVOLUTION	76	240	1000	4,4	105	230	50	B	24	7,4	285	242

Accessories



Electromagnetic brake
Cavo 6mt
cod. 75120000



Brake release handle
cod. 75160000